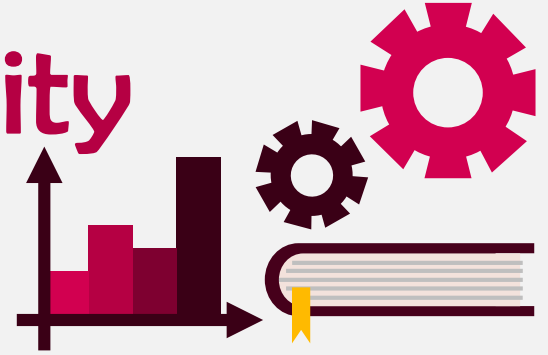




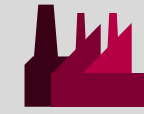
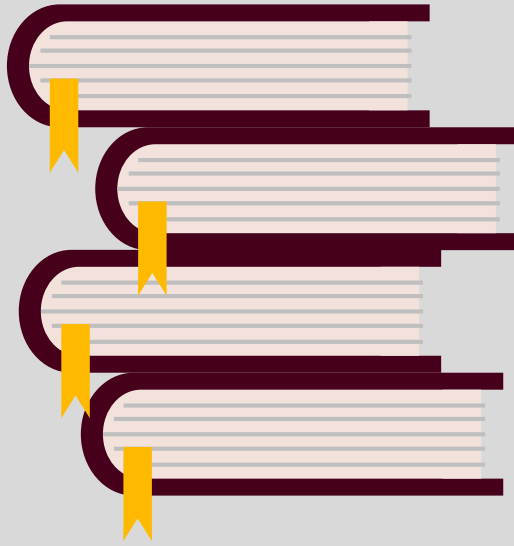
Santa Clara University

Class of 2009

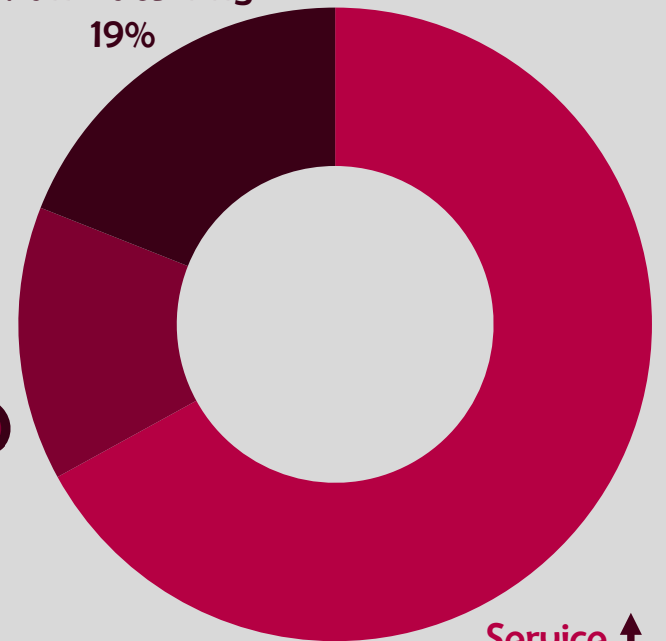


Workforce Statistics

Sectors of Employment¹



Manufacturing
19%



Non-Profit
14%



Service
67%



Note: Percentages may not add to 100 due to rounding

Graduates Rate

SCU

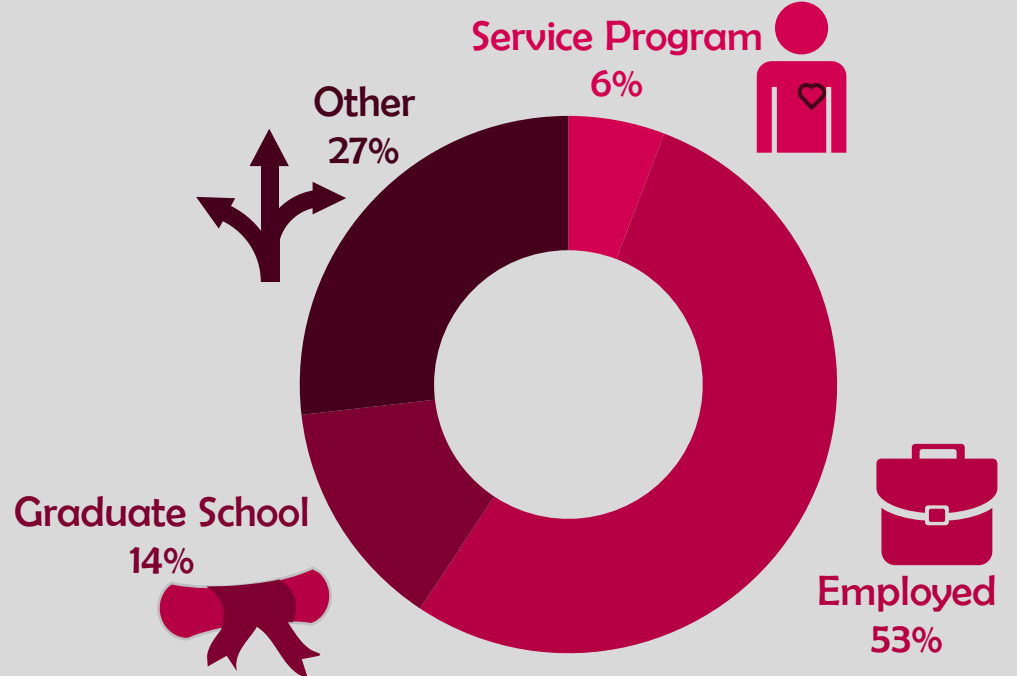
Good to Excellent preparation for...

Career¹ 88%

Life after College² 90%

Graduate Study³ 93%

Where Are They Now?



28% Granted one or more fellowships, teaching assistantships, and/or research assistantships³

90% Admitted to at least one graduate program⁴

¹ of those working, ² all graduates, ³ of those attending graduate school, ⁴ of those who applied for graduate study, ⁵ of graduates in the job market

The Santa Clara Survey of recent graduates connects employment, education, civic, and satisfaction outcomes to measure the impact of a Santa Clara education. Conducted annually at six-months post-graduation, the 39.8% response rate yields a profile that is representative of the graduating class. Initiated with the class of 2008, these longitudinal data track Santa Clara's progress to ensure an education of citizens and leaders of competence, conscience, and compassion.

Source: first-time, four-year graduates responding to the Survey of Recent Graduates in 2009. For additional information, see www.scu.edu/ir/data/student-outcomes or contact: institutionalresearch@scu.edu

Santa Clara University Class of 2009

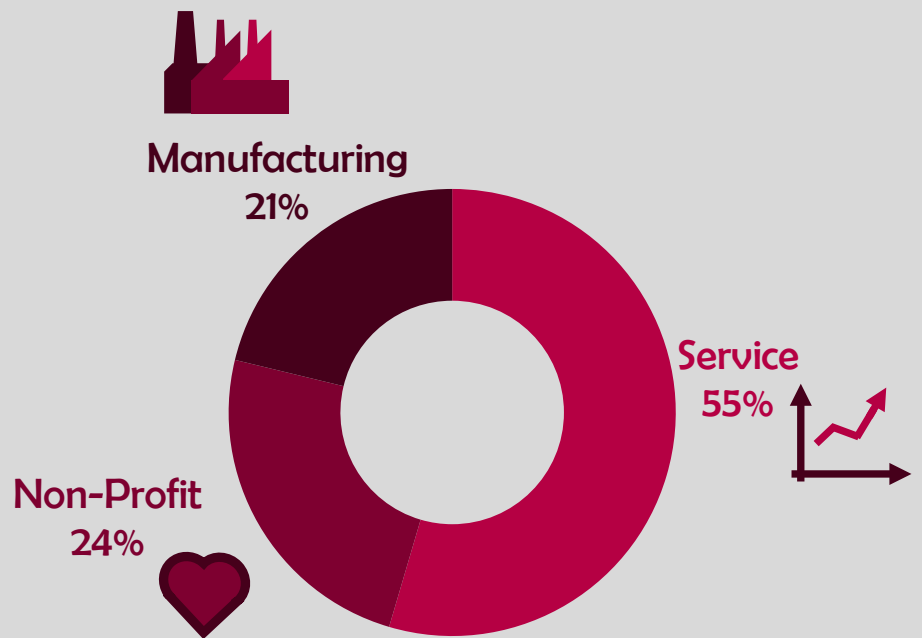
College of Arts and Sciences

Arts and Humanities

Workforce Statistics



Sectors of Employment¹



Note: Percentages may not add to 100 due to rounding

Graduates Rate

SCU

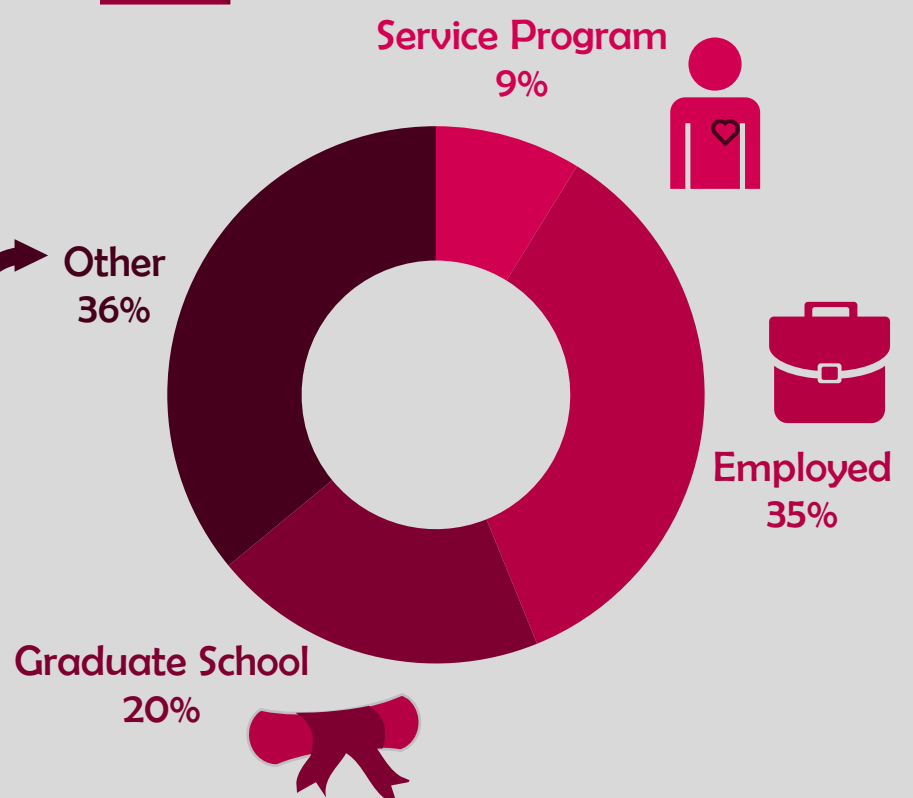
Good to Excellent preparation for...

Career¹ 88%

Life after College² 90%

Graduate Study³ 94%

Where Are They Now?



13%

Granted one or more fellowships, teaching assistantships, and/or research assistantships³

96%

Admitted to at least one graduate program⁴

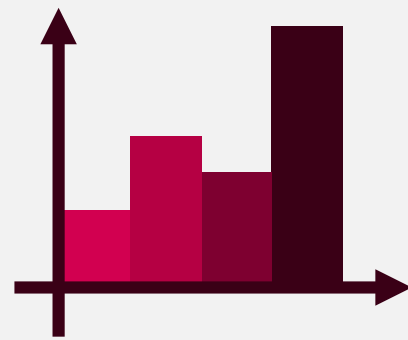
¹ of those working, ² all graduates, ³ of those attending graduate school, ⁴ of those who applied for graduate study, ⁵ of graduates in the job market

The Santa Clara Survey of recent graduates connects employment, education, civic, and satisfaction outcomes to measure the impact of a Santa Clara education. Conducted annually at six-months post-graduation, the 39.8% response rate yields a profile that is representative of the graduating class. Initiated with the class of 2008, these longitudinal data track Santa Clara's progress to ensure an education of citizens and leaders of competence, conscience, and compassion.

Source: first-time, four-year graduates responding to the Survey of Recent Graduates in 2009. For additional information, see www.scu.edu/ir/data/student-outcomes or contact: institutionalresearch@scu.edu



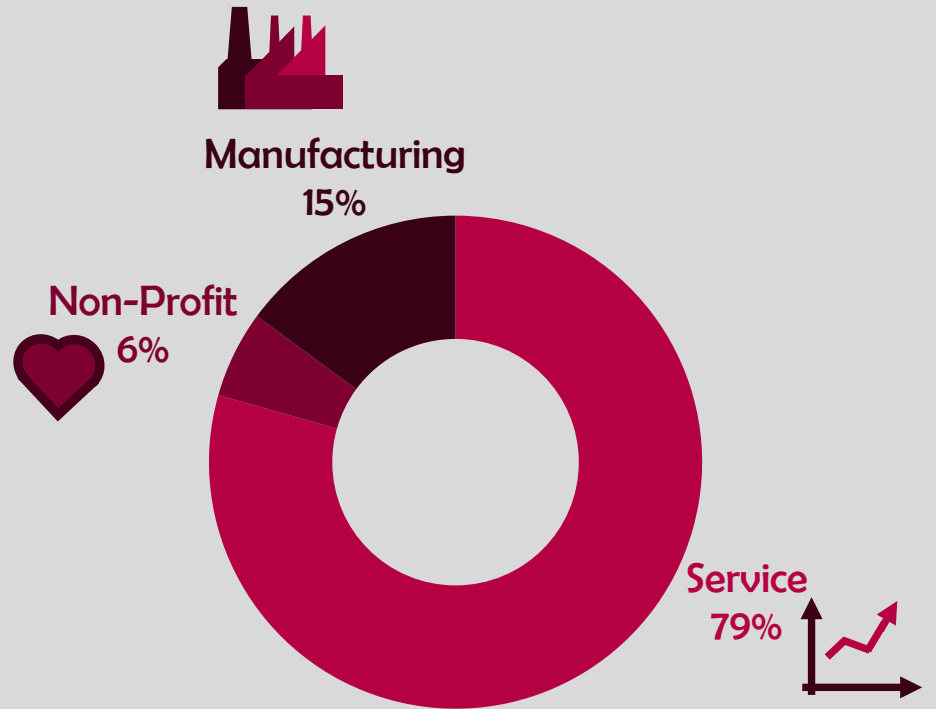
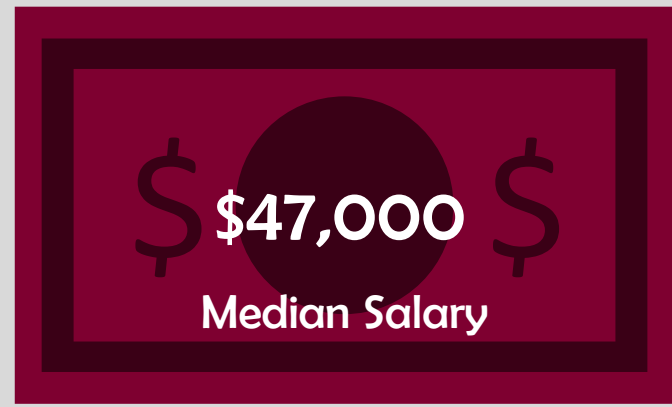
Santa Clara University Class of 2009



Leavey School of Business

Workforce Statistics

Sectors of Employment¹



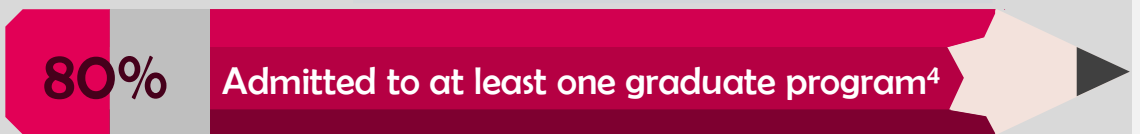
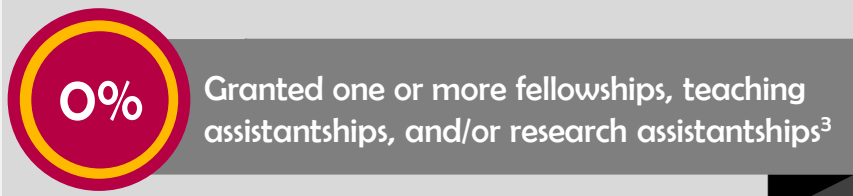
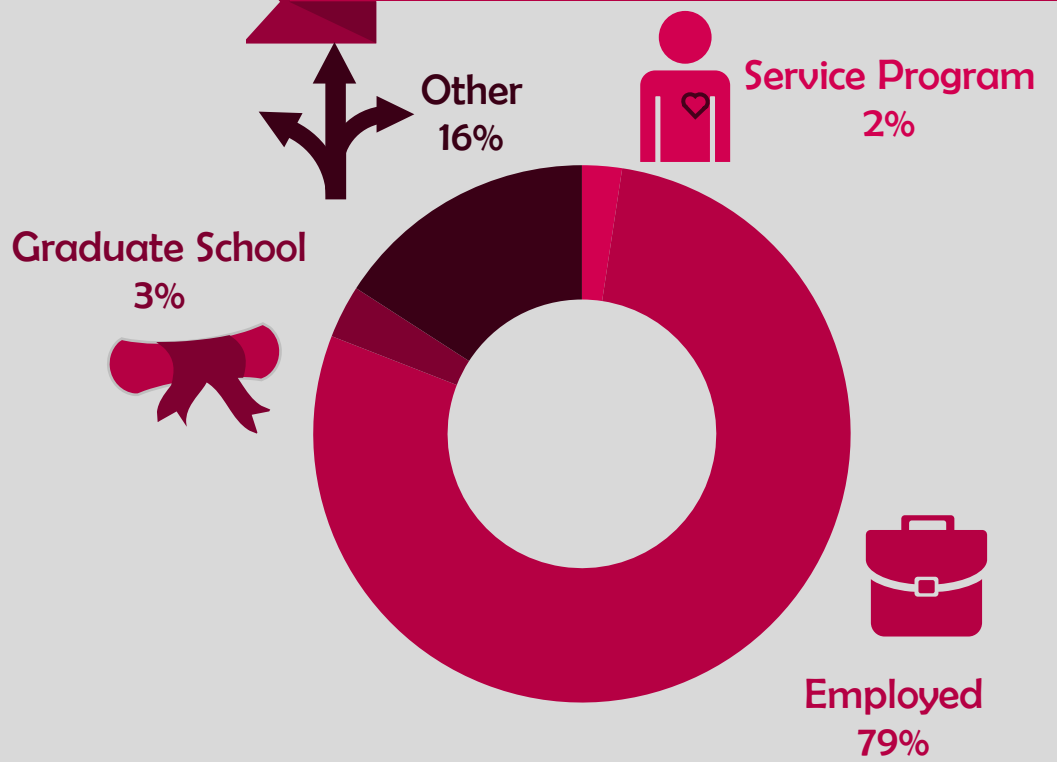
Note: Percentages may not add to 100 due to rounding

Graduates Rate



- Good to Excellent preparation for...
 - Career¹ 86%
 - Life after College² 90%
 - Graduate Study³ 100%

Where Are They Now?



¹ of those working, ² all graduates, ³ of those attending graduate school, ⁴ of those who applied for graduate study, ⁵ of graduates in the job market

Santa Clara University Class of 2009

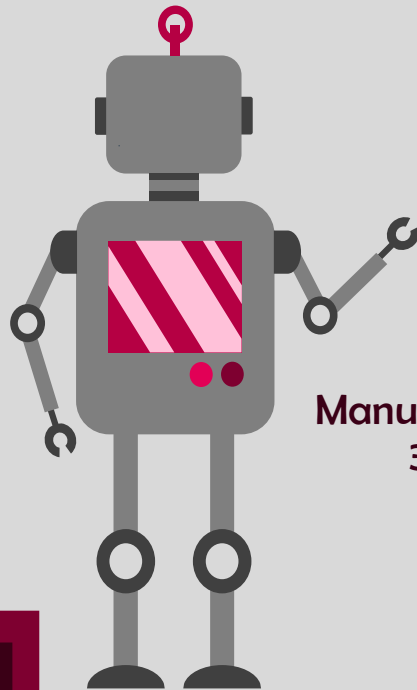
School of Engineering

Workforce Statistics

Sectors of Employment¹

73%
Are Employed⁵

\$52,000
Median Salary



Manufacturing
39%

Non-Profit
6%

Service
55%

Note: Percentages may not add to 100 due to rounding

Graduates Rate

SCU

Good to Excellent preparation for...

Career¹ 84%

Life after College² 87%

Graduate Study³ 100%

Where Are They Now?

Other
16%

Graduate School
24%

Employed
60%

60% Granted one or more fellowships, teaching assistantships, and/or research assistantships³

91% Admitted to at least one graduate program⁴

¹ of those working, ² all graduates, ³ of those attending graduate school, ⁴ of those who applied for graduate study, ⁵ of graduates in the job market

The Santa Clara Survey of recent graduates connects employment, education, civic, and satisfaction outcomes to measure the impact of a Santa Clara education. Conducted annually at six-months post-graduation, the 39.8% response rate yields a profile that is representative of the graduating class. Initiated with the class of 2008, these longitudinal data track Santa Clara's progress to ensure an education of citizens and leaders of competence, conscience, and compassion.

Source: first-time, four-year graduates responding to the Survey of Recent Graduates in 2009. For additional information, see www.scu.edu/ir/data/student-outcomes or contact: institutionalresearch@scu.edu

Santa Clara University

Class of 2009

College of Arts and Sciences

Math and Natural Sciences

Workforce Statistics



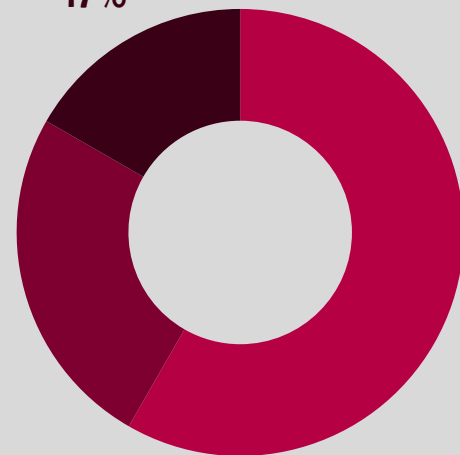
Sectors of Employment¹



Manufacturing
17%



Non-Profit
25%



Service
58%



Note: Percentages may not add to 100 due to rounding

Graduates Rate

SCU

Good to Excellent preparation for...

Career¹ 92%

Life after College² 85%

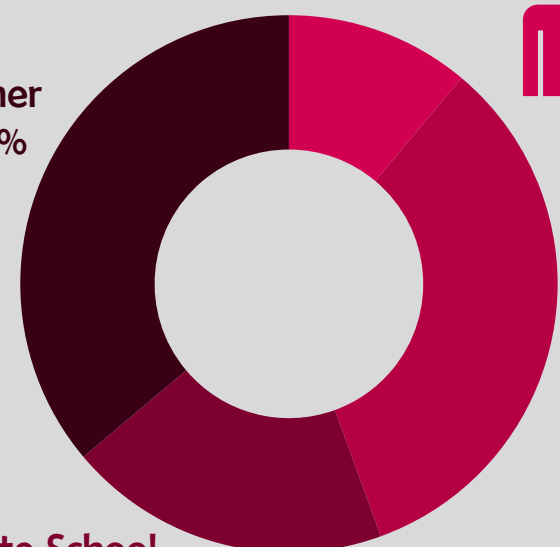
Graduate Study³ 71%

Where Are They Now?

Service Program
11%



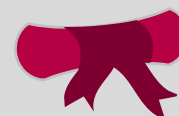
Other
36%



Employed
33%



Graduate School
20%



46%

Granted one or more fellowships, teaching assistantships, and/or research assistantships³

93%

Admitted to at least one graduate program⁴

¹ of those working, ² all graduates, ³ of those attending graduate school, ⁴ of those who applied for graduate study, ⁵ of graduates in the job market

The Santa Clara Survey of recent graduates connects employment, education, civic, and satisfaction outcomes to measure the impact of a Santa Clara education. Conducted annually at six-months post-graduation, the 39.8 % response rate yields a profile that is representative of the graduating class. Initiated with the class of 2008, these longitudinal data track Santa Clara's progress to ensure an education of citizens and leaders of competence, conscience, and compassion.

Source: first-time, four-year graduates responding to the Survey of Recent Graduates in 2009. For additional information, see www.scu.edu/ir/data/student-outcomes or contact: institutionalresearch@scu.edu

Santa Clara University

Class of 2009

College of Arts and Sciences

Social Sciences

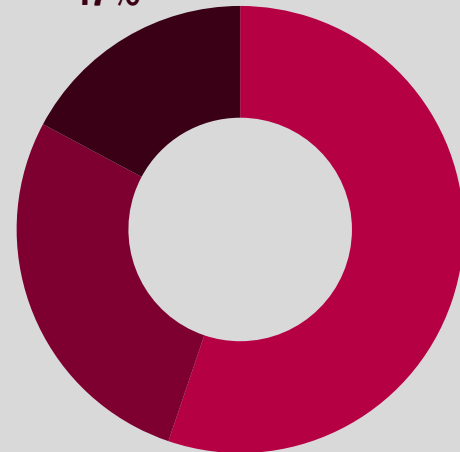
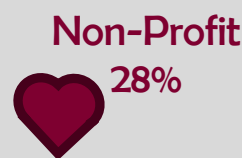
Workforce Statistics



Sectors of Employment¹



Manufacturing
17%



Note: Percentages may not add to 100 due to rounding

Graduates Rate

SCU

Good to Excellent preparation for...

Career¹ 93%

Life after College² 93%

Graduate Study³ 100%

Where Are They Now?

Service Program
7%

Other
32%

Graduate School
15%

Employed
46%

20% Granted one or more fellowships, teaching assistantships, and/or research assistantships³

77%

Admitted to at least one graduate program⁴

¹ of those working, ² all graduates, ³ of those attending graduate school, ⁴ of those who applied for graduate study, ⁵ of graduates in the job market

The Santa Clara Survey of recent graduates connects employment, education, civic, and satisfaction outcomes to measure the impact of a Santa Clara education. Conducted annually at six-months post-graduation, the 39.8% response rate yields a profile that is representative of the graduating class. Initiated with the class of 2008, these longitudinal data track Santa Clara's progress to ensure an education of citizens and leaders of competence, conscience, and compassion.

Source: first-time, four-year graduates responding to the Survey of Recent Graduates in 2009. For additional information, see www.scu.edu/ir/data/student-outcomes or contact: institutionalresearch@scu.edu